

Ophthalmic Lenses Single-Use and Reusable



These lenses can be used with the appropriate therapeutic lasers. Each lens comes in a sterile pouch and is supplied in quantities of 10 per box.



K30-1005 4 mirror

A diagnostic lens with four 64° mirrors for efficient visualization of the angle with minimal lens manipulation and a central optic for viewing the posterior pole. Image magnification of 0.8x.



K30-1015 Single mirror

A lens for diagnostic, surgical and therapeutic procedures including SLT, offering an excellent view of the anterior chamber angle. Image and laser spot magnification of 1.0x. The mirror is wider and flatter than existing lens designs.



K30-1000 3 mirror

A general purpose lens that has a central optic for viewing the posterior pole and mirrors for viewing/treating the anterior chamber angle, peripheral regions and arcades regions. Image magnification 0.93x and laser spot magnification 1.08x. Mirrors are wider and flatter than existing lenses on the market, offering exceptional optics.



K30-1002 Small 3 mirror

The small 3 mirror lens offers eye care providers a choice of single-use 3 mirror lenses without sacrificing the exceptional optics of the comprehensive lens selection. Excellent all-purpose lens specially sized for smaller palpebral fissure & pediatric patients. Image magnification 0.93x and laser spot magnification 1.08x.

These lenses have a custom anti-reflection coating and can be used with the appropriate therapeutic lasers. Each lens comes in a sterile pouch and is supplied in quantities of 10 per box.

K30-I110 Fundus

This lens was designed to provide a central 0.93x magnified view for observation of the macula and optic nerve head area. Laser spot magnification of 1.08x.



K30-I120 Capsulotomy

Large diameter optic is more than twice the standard, allowing treatment outside the visual axis of the patient. Image magnification factor 1.8x and laser spot magnification 0.56x. Exceptional single piece optics with no risk of the magnifying lens detaching.



K30-I130 Iridotomy

This lens is designed with a large diameter optic to view/treat structures of the peripheral iris. The larger diameter magnifying optic has a wider view than existing lens designs and offers great latitude in therapy positioning. Image magnification 1.6x and laser spot magnification 0.63x. Outstanding single piece optics with no risk of the magnifying lens detaching.



K30-I320 Retina 90

Primarily designed to facilitate diagnosis and treatment of diabetic eye disease and age related macular degeneration, this lens offers a 1.0x magnified view within the region of the arcades. Laser spot magnification of 1.0x.



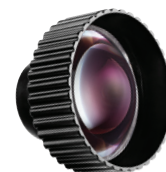
K30-I310 Retina 170

This lens offers a wide angle view and can be used for pan retinal photocoagulation (PRP) and for treatment of age related macular degeneration. Indirect image magnification 0.52x and laser spot magnification of 1.92x.



K30-I300 Retina 180

This lens offers an exceptional wide angle view up to the ora serrata. Indirect image magnification of 0.8x and high definition, broad field view of the fundus. Used to treat diabetic eye disease, particularly pan retinal photocoagulation (PRP) and age related macular degeneration, and it has laser spot magnification of 1.25x.



K30-I330 Retina 200

This lens represents a breakthrough in lens optics. The optical design of the lens permits imaging and treatment of the far peripheral retina with less distortion, and observation of the retina including the ora serrata. An excellent lens for PRP. It has laser spot magnification of 1.67x, 0.6x image magnification, and a 200° field of view.



Bi-aspheric single-use lenses

This collection of single-use bi-aspheric lenses offers exceptional optics with anti-reflection coating for use in the operating room or NICU. Each lens is provided in a sterile pouch ensuring no scratches or water marks from reprocessing. Single-use lenses supplied in quantities of 10 per box.



K30-2420 20D

The single-use 20D lens provides a clear 3.0x magnified image of the patient's fundus and a 53° field of view. The laser spot magnification is 0.33x.



K30-2415 28D

The single-use 28D lens provides a clear 2.1x magnified image of the patient's fundus and a 53° field of view. The laser spot magnification is 0.47x.



K30-2410 60D

The single-use 60D lens provides a clear 0.96x magnified image of the patient's fundus and a 68° field of view.



K30-2405 Osher 78D

The single-use 78D lens provides a clear 0.77x magnified image of the patient's fundus and a 80° field of view.



K30-2400 90D

The single-use 90D lens provides a clear 0.64x magnified image of the patient's fundus and a 75° field of view.

Single-use lenses — Surgical

New and pristine optics for every patient; no dust, scratches, or fingerprints. Each lens comes in a sterile pouch. Single-use lenses supplied in quantities of 10 per box.

K30-1405 Surgical gonio prism — Left hand

This lens allows direct viewing (no mirror) of the angle during glaucoma surgery. Image magnification is 1.2x. Both right and left handed version available. (Also available, K30-1400 Surgical gonio prism — Right hand).



K30-1407 Hands-Free Gonio Prism

This lens allows direct viewing (no mirror) of the angle during glaucoma surgery including MIGS. Unique design provides secure lens stability with the use of a coupling gel and allows for bi-manual surgery without the help of an assistant.



K30-1210 Suture lysis

This lens is primarily used for the post-operative management of sutures following trabeculectomy and some glaucoma drainage device surgeries to alter filtration rate and manage intraocular pressure. It is used to compress blood vessels in conjunctiva, improve suture visibility and precision lasering (with Argon or Diode). This lens has an image magnification of 1.20x and a laser spot of 0.83x.



K30-1020 Single mirror with handle

This lens allows indirect viewing (via a mirror) of the angle during glaucoma surgery. Image and laser spot magnification of 1.0x. It has a custom anti-reflection coating that minimizes unwanted reflections.



K30-1010 4 mirror gonio with handle

This lens has four 64° mirrors for efficient visualization of the angle and a central optic for viewing the posterior pole. It is mounted on a handle for easy manipulation. Image magnification of 0.8x.



K30-1520 Surgical wide field with handle

This small, wide field lens offers a 155° field of view with an image magnification of 0.42x and an anti-reflection coating. The physical size makes it ideal for surgery.



New and pristine optics for every patient; no dust, scratches, fingerprints or water marks. Unlike traditional reusable lenses, single-use lenses have anti-reflection coatings and are provided with the silicone ring attached and ready for use. Each lens comes in a sterile pouch. Single-use lenses supplied in quantities of 10 per box.

Vitrectomy lenses & accessories

A. K30-I440 Plano

This lens offers a 36° field of view of the retina at a magnification of 1.02x.

B. K30-I435 Magnifier

This lens offers a 30° field of view and a 1.2x magnified image.

C. K30-I430 Bi-concave

This lens offers a 45° field of view and a 0.8x magnification. In an air filled eye the field of view is 25 degrees.

D. K30-I505 Single-use forceps

The forceps allow placement and manipulation of any of the vitrectomy lenses.

E. K30-I535 Suture ring with tabs

This ring with tabs provides a stable platform to hold any of the vitrectomy lenses. Also available without tabs — K30-I530 Suture ring.



Prism lenses

A. K30-I420 20 degree prism

This lens offers a 36° field of view with a 1.02x image magnification for imaging of the peripheral fundus.

B. K30-I425 30 degree prism

This lens offers a 36° field of view and a 1.02x magnified image.

K30-I450 Surgical wide field

This small, wide field lens offers a 155° field of view with an image magnification of 0.42x and an anti-reflection coating. The physical size makes it ideal for surgery.



Bi-aspheric non-contact

Diamond series reusable lenses

The Diamond series of reusable bi-aspheric lenses feature exceptional optics at an extraordinary value. Each lens features an evaporated diamond hard coating for scratch resistance as well as an anti-reflective coating. An ultralight aluminum alloy rim with a black “Sure Grip” ring makes each lens ergonomically friendly. These lenses offer exceptional small pupil performance and low image distortion. Sold individually.

K31-2370 Diamond 20D

This reusable 20D lens provides an image magnification of 3.0x and a 53° field of view.



K31-2365 Diamond 28D

This reusable 28D lens provides an image magnification of 2.1x and a 53° field of view.



K31-2360 Diamond 60D

This reusable 60D lens provides an image magnification of 0.96x and a 68° field of view.



K31-2355 Diamond 78D

This reusable 78D lens provides an image magnification of 0.77x and a 80° field of view.



K31-2350 Diamond 90D

This reusable 90D lens provides an image magnification of 0.64x and a 75° field of view.



Contact lenses for clinic - Diamond series reusable lenses

The Diamond series of reusable contact lenses feature exceptional optics at an extraordinary value. Each lens features an evaporated diamond hard coating for scratch resistance as well as an anti-reflective coating. An ultralight aluminum alloy rim with a black "Sure Grip" ring makes each lens ergonomically friendly. These lenses offer exceptional small pupil performance and low image distortion. Sold individually.

K3I-I002 Diamond 3 mirror

A general purpose lens that has a central optic for viewing the posterior pole and mirrors for viewing/treating the anterior chamber angle, peripheral and arcades regions. Image magnification 0.93x and laser spot magnification 1.08x. Mirrors are wider and flatter than existing lenses on the market, offering exceptional optics.



K3I-I005 Diamond 4 mirror

A diagnostic lens with four 64° mirrors for efficient visualization of the angle with minimal lens manipulation and a central optic for viewing the posterior pole. Image magnification of 0.8x.



K3I-I120 Diamond Capsulotomy Lens

Large diameter optic is more than twice the standard, allowing treatment outside the visual axis of the patient. Exceptional optics with no chance of the lens button detaching due to single-piece lens design. Lenses have a custom evaporated diamond coating and can be used with the appropriate therapeutic lasers. Image magnification factor 1.8x and laser spot magnification 0.56x.



K3I-I130 Diamond Iridotomy Lens

Designed with a large diameter optic to view/treat structures of the peripheral iris. Larger diameter magnifying optic has a wider view than existing lens designs and offers great latitude in therapy positioning. Outstanding optics with no chance of the lens button detaching. Optimized optic to allow for laser placement under the lid to reduce appearance of a ghost image. Lenses have a custom evaporated diamond coating and can be used with the appropriate therapeutic lasers. Image magnification 1.6x and laser spot magnification 0.63x.



K3I-I330 Diamond Retina 200

This lens represents a breakthrough in lens optics. The optical design of the lens permits imaging and treatment of the far peripheral retina with less distortion. Expansive field of view to observe and treat the entire retina. Observation of the retina including the ora serrata. An excellent lens for PRP. Image magnification 0.60x, laser spot magnification 1.67x, and a 200° field of view.



Order Online: corzaeye.com

Order by Phone: 800-225-1195

For more information, visit corzaeye.com



Corza Ophthalmology (Katena Products, Inc.), 6 Campus Drive, Suite 310, Parsippany, NJ 07054, USA
Phone: 973.989.1600, Toll free (USA only): 800.225.1195, Fax: 973.989.8175

All trademarks are owned by the company and its affiliates.

©2022 Corza Medical

All Rights Reserved. KL-CAT-030718-Rev2